

How to Download and Install Sage Peachtree

Notes:

-- If you are installing on a network, you need to download and install Sage Peachtree on the computer that will store your company data files (the server) and then on each workstation. For further instructions, see the section titled ["Installing on a Network."](#)

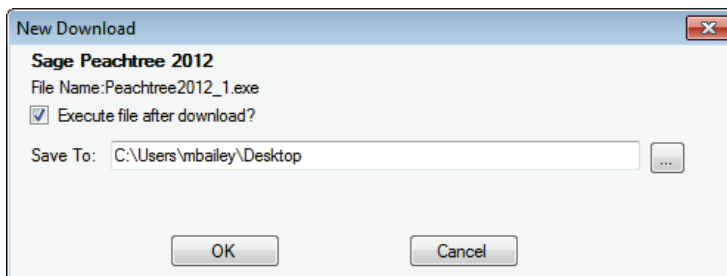
--We recommend that you use Internet Explorer when downloading the product.

1) Install the Sage Download Manager.

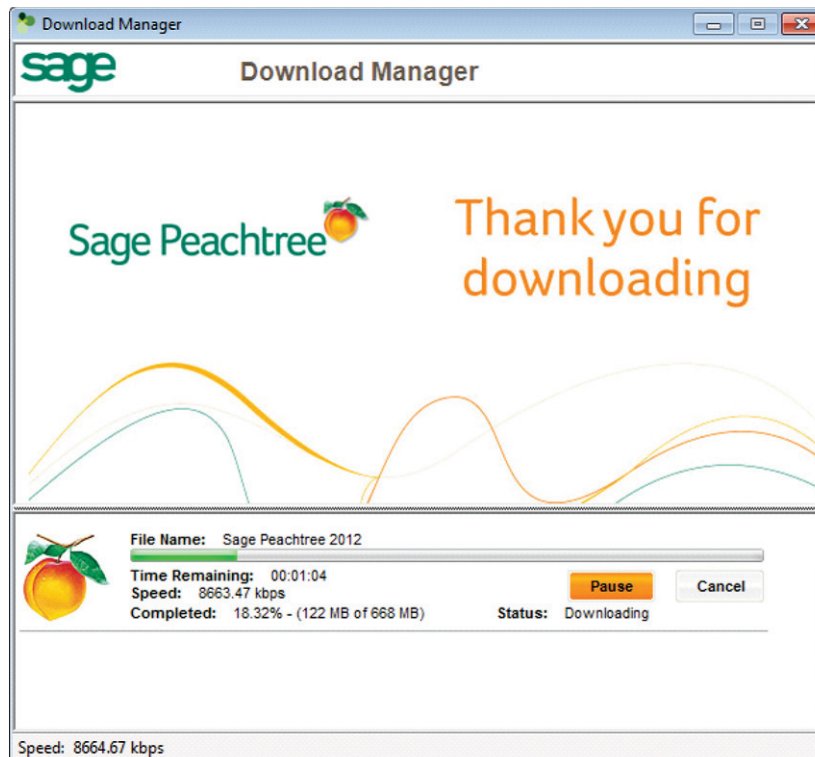
- Click **Download** on the product download page to install the Sage Download Manager. You can find the link for your product download in the email you received when you ordered your product. The subject of the email is 'Sage Download Notification for Order No.'

2) Download the Sage Peachtree installation file.

- After the Sage Download Manager is installed you are prompted to save the download file. By default, the Sage Peachtree installation file (Peachtree2012_1.exe) is saved to your computer's desktop. To install the product after it downloads, we recommend to leave the option 'Execute file after download' selected. Click OK to start the download.



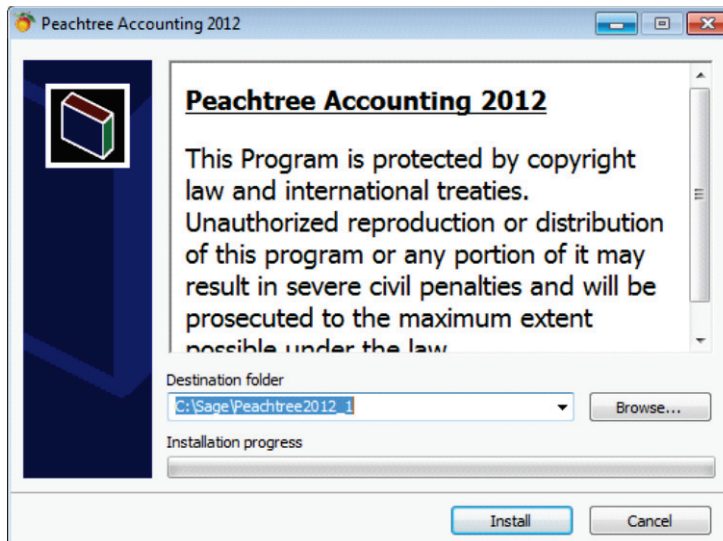
- The Sage Download Manager downloads the product installation file. *Note: The product is not installing at this point. After the file is downloaded, the Installation Wizard will automatically open to assist you with installing the product.



- If you did not choose to execute the file after the download, double-click the **Peachtree2012_1.exe** icon on the desktop to run the install. If you do not see the icon, open Windows Explorer and do a search for Peachtree2012_1.exe. The file should be located wherever you chose to download it (by default, the file is downloaded to your computer's desktop).

3) Install Sage Peachtree

- Once the download is complete, you can click Install to start the installation.
*Note: By default the installation file directory is located at C:\Sage\Peachtree2012_1. This directory contains the same contents that are found on the product installation disc. You can access this directory if you ever need to re-install the product.



- **Installing on a network**
 - If you are installing on a network, you need to install Sage Peachtree on the server first and then on each workstation.
 - When installing on a network, you will use this same product installation file you downloaded (Peachtree2012_1.exe) to install on the server and each workstation (just like you would have used one disc for all of the installations).

Once you have installed the product on the server first, there are several ways you can proceed to install on the workstations.

- If you selected the option to 'Use the network installation manager' during the install, make sure to 'View the network tips' at the end of the installation for the quickest method to install on your workstations. We recommend that you print the network tips or save them to a flash drive.
- Download the Peachtree2012_1.exe file to each computer from the product download page.
- Copy the downloaded Peachtree2012_1.exe file onto a CD or put it on a flash drive to take the file to each computer.
- Put the downloaded Peachtree2012_1.exe file out on the network where it can be accessed from each computer, then copy the downloaded file to each computer.