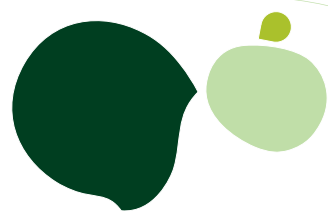


# Sage 100 ERP



## Sage Credit Card Processing\*

A complete payment processing solution, the Sage 100 ERP Credit Card Processing by Sage Payment Solutions module gives Sage 100 ERP (formerly Sage ERP MAS 90 and 200) customers the benefits of comprehensive business management coupled with the benefits of credit purchase processing—all from Sage. What's more, having all payment processing in-house with Sage Payment Solutions enables Sage to pass savings onto customers, resulting in a lower total cost of ownership.

Studies show that more and more purchases are being made with credit cards each year, and vendors who accept credit cards increase their sales by 15 to 50 percent. Sage 100 ERP customers can take full advantage of this opportunity with the ease and efficiency offered by fully integrated credit payment processing.

Credit Card Processing by Sage Payment Solutions provides a complete credit card processing solution for mail order, telephone order, and Internet businesses, including corporate and government purchasing cards. Data can be entered through the Sales Order and Accounts Receivable modules and .store and .order eBusiness Manager applets. Transactional information, such as authorization codes, is captured and stored for historical and reconciliation purposes.



### BENEFITS

- Automatically connects to Merchant Accounts for credit card authorizations and settlements
- Process payments using Sales Order, Accounts Receivable, and eBusiness Manager modules
- Complete, secure, 24/7 online transaction reporting
- Stored credit card numbers are encrypted within Sage 100 ERP
- Credit Verification Value (CVV2) is fully supported to help verify card authenticity
- Compliant with Visa and MasterCard Payment Card Industry (PCI) data security standard
- Multiple address verification options add an additional layer of credit card authentication
- User-level password protection combined with strict adherence to PCI security standards helps ensure your system is secure

\*This module is compatible with Sage 100 Standard and Advanced ERP.



Credit Card Monthly Summary							
View	Merchant ID	Month/Year	Sales Count	Sales Volume	Credit Count	Credit Volume	Avg Ticket
	3948000031000953	01/2007	11	\$18,947.35	0	\$0.00	\$1,722.49
	3948000031000953	12/2006	2	\$7,000.00	1	\$5,000.00	\$3,500.00
	3948000031000953	11/2006	5	\$13,250.00	1	\$890.22	\$2,650.00
	3948000031000953	10/2006	18	\$25,154.69	5	\$6,750.00	\$1,397.48
	3948000031000953	09/2006	7	\$8,070.77	1	\$500.05	\$1,152.97
	3948000031000953	08/2006	15	\$27,392.54	2	\$3,000.00	\$1,826.17
	3948000031000953	07/2006	10	\$19,255.23	1	\$200.00	\$1,925.52
	3948000031000953	06/2006	3	\$6,600.00	3	\$1,100.00	\$2,200.00
	3948000031000953	05/2006	14	\$11,088.21	2	\$3,500.00	\$792.02
	3948000031000953	04/2006	10	\$19,591.14	1	\$500.00	\$1,959.11
	3948000031000953	03/2006	10	\$13,072.46	2	\$2,500.00	\$1,307.25
	3948000031000953	02/2006	15	\$17,267.00	1	\$1,000.00	\$1,151.13
			120	\$186,689.39	20	\$24,940.27	\$1,555.74

3 Second(s)

Increases operational efficiency with full online reporting, including historical data. Real-time reports allow you to see:

- Settled batches.
- Deposit amounts.
- Statements (current and historical).
- Chargebacks.
- Transaction history.
- Returns and credits.
- ACH information.

## Edition

Compatible with Sage 100 Standard and Advanced ERP

## Features

### Works the Way You Do

Sage Credit Card Processing by Sage Payment Solutions adds functionality in key areas of Sage 100 ERP—Sales Order and Sales Order Invoice Entry, Accounts Receivable, eBusiness Manager .order and .store applets, Customer Maintenance, and Payment Type maintenance.

### Credit Verification Version 2 (CVV2)

CVV2 helps verify card authenticity by validating that purchasers do, in fact, have the card in their possession, which helps reduce chargebacks for e-commerce and mail order purchases.

### Address Verification Services

Address verification services add another layer of credit card authentication by comparing the purchaser's billing address with the billing address on record.

### User-Level Password Protection

The system's multiple password layers increase the security of customer card numbers and information by reducing the possibility of unauthorized access into database content and functions.

### Data File Encryption

The system's data file encryption capabilities further increase the security of customer data by ensuring credit card account numbers are encrypted in the database.

### Merchant Account Provided Solutions

Sage Payment Solutions has made it easy for businesses to accept electronic payments for more than 17 years. Funds collected from credit card transactions are automatically deposited into your existing business bank account.

### Purge Utility

Complying with PCI standards, the Purge Utility securely deletes any sensitive credit card data from the Sage 100 ERP system.

### Online Reporting

Secure online access to all your key transaction information is included for your merchant account, 24/7, at: [www.myvirtualreports.com](http://www.myvirtualreports.com)