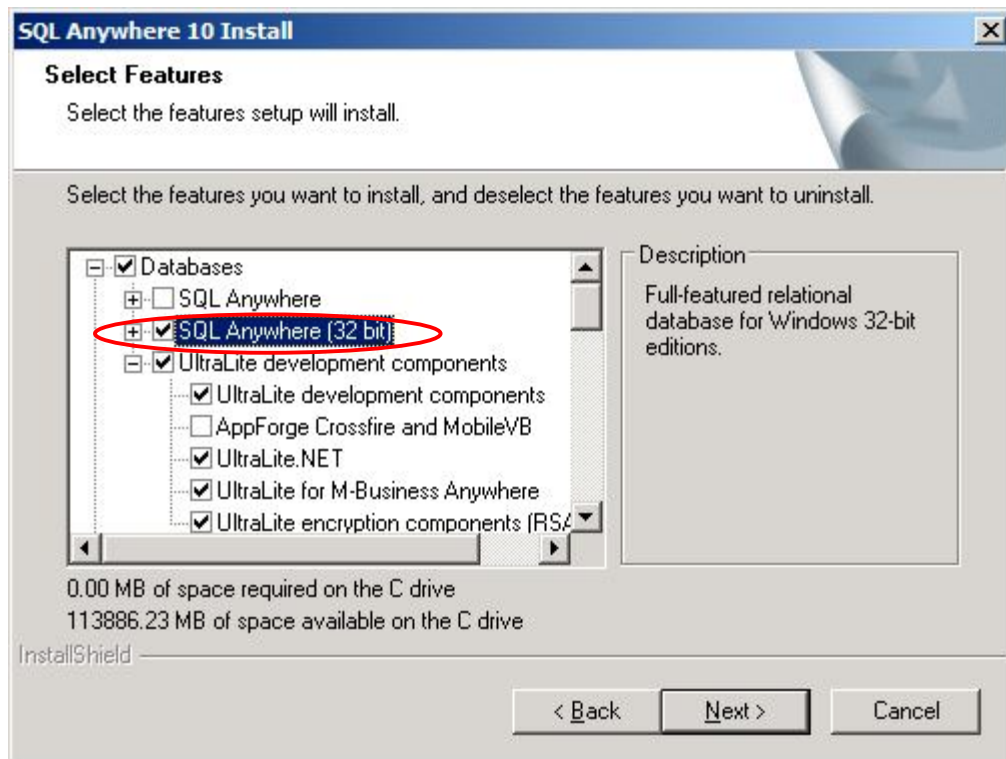


**Steps for installing EPE on Windows 7 (64bit)/Windows Server 2008 (64bit) using 32bit ODBC connection:**

1) Install Sybase 10 in "C:\Program File(x86)\SQL Anywhere 10\



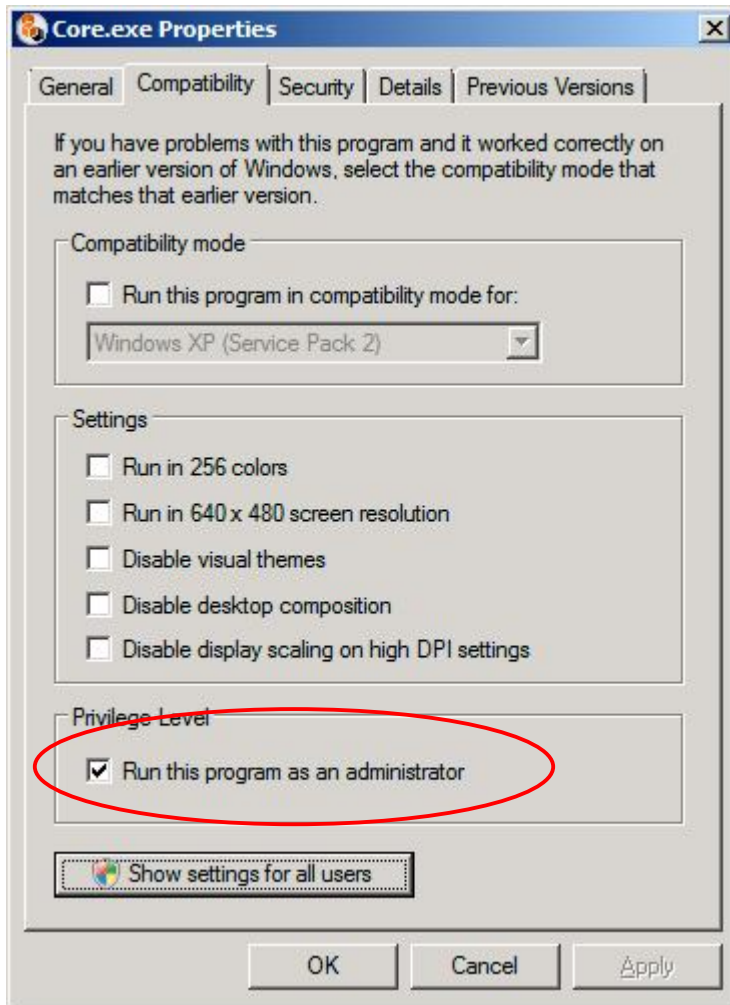
2) Install EPE in "C:\Program File(x86)\Easy Pay Enterprise

3) Create ODBC connection by using "C:\windows\SysWOW64\odbc32.exe"

4) Set "Run this program as an administrator" property for the following:

- Core.exe
- EPEControl.exe
- CreativeService.exe
- CSSControl.exe
- AlertService.exe
- EmailService.exe

To do so, locate the "\Easy Pay Enterprise\Program" folder, right click on "Core.exe" and select "Properties". Go to "Compatibility" tab - Privilege Level, tick the "Run this program as an administrator" check box as shown:



Do the same for the rest of the executable as list above.

- 5) Where applicable, turn off DEP for "\Easy Pay Enterprise\Program\PEPMailer.exe". To do so, go to "Control Panel > System > Advanced System Settings. Under Performance, click Settings. Click the "Data Execution Prevention" tab, and then click "Turn on DEP for all programs and services except those I select" as shown below. Next add EPEmailer.exe.

