

Sage Intacct and Kanso Solution for Affordable Housing

Enhance financial management, operational efficiency, and compliance while providing housing to those most in need

Public housing organizations face a wide range of challenges: from resource constraints and housing shortages to navigating complex compliance requirements, you need a technology stack to streamline operations, enhance reporting, and provide strategic oversight. Sage has partnered with Kanso to bring your fund accounting and housing software together, with products known for their deep functionality and reputation of helping housing-focused nonprofits advance mission impact.

Cloud-based scalable solution for public housing financials and administration

Automate the flow of tenant subledger data from Kanso to Sage Intacct to save time and reduce data entry errors. Connecting your systems means financial records are always current, facilitating more accurate cash flow, budgeting, and forecasting. Transform your data into knowledge, gaining clarity into all aspects of your operations and the people you serve, including occupancy, finance, maintenance, and reporting.

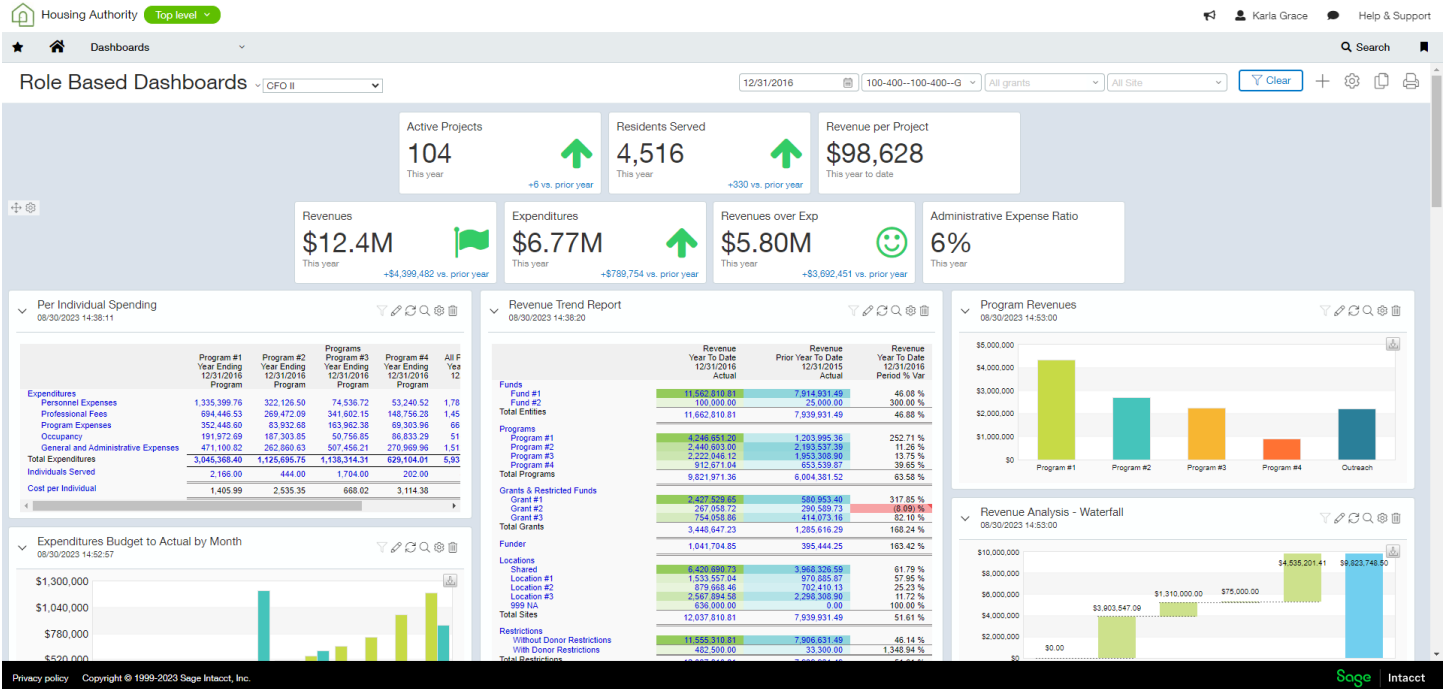


Save time and streamline reporting, compliance, and audit

Navigating the complex web of federal, state, and local housing regulations is crucial to mission success. Leveraging Kanso and Sage Intacct together allows you to maintain compliance and simplify your audit with accurate and up-to-date financial, tenant, and property records. HUD, USDA, and tax credit forms can be generated easily from tenant data, saving you hours in reporting time. Take the guesswork out of complex rules governing program acceptance criteria with a completely automated tenant life cycle.

Complete strategic oversight for better decision-making

Gain a comprehensive understanding of your organization's overall financial health with integrated financial, property, and tenant data. Benefit from a single source of truth with better visibility into tenant details, maintenance requests, property performance, and other trends. An accurate, real-time, 360-degree view of your organization enhances property management's competitiveness and sustainability and the ability to make more informed, confident decisions.



By connecting your financial data in Sage Intacct with your housing data in Kanzo, you'll gain detailed, transparent reports on financial performance and program outcomes.

Kanzo capabilities include:

- Applicant and wait list management
- Applicant, landlord, and tenant portals
- Bulk late fees
- Correspondence and templates
- Custom action documents and inspection templates
- Custom work order status
- Data visualization dashboards
- General ledger integration
- Group tenant actions
- Inspections and work orders
- Mobile maintenance iPad applications
- Multi-family 50059
- Payouts processing - ACH/Check/CSV export
- PIC export
- Rent calculations
- Self-sufficiency programs - FSS, ROSS, MTW, WTW
- Tax credits (TIC forms)
- Vendor management
- Voucher management

Sage Intacct capabilities include:

- Accounts payable
- Accounts receivable
- Allocations management
- Budgeting and planning
- Cash management
- Dimensional general ledger
- Fixed assets
- Fund accounting
- Grant tracking and billing
- Inventory management
- Multi-entity and global consolidations
- Order management
- Purchasing
- Reporting and dashboards
- Revenue recognition
- Spend management
- Time and expense management
- Vendor payment services

sageintacct.com/nonprofit
877-437-7765

©2024 The Sage Group plc or its licensors. Sage, Sage logos, Sage product and service names mentioned herein are the trademarks of The Sage Group plc or its licensors. All other trademarks are the property of their respective owners.

